



# Corporate Data / Investor Information

As of March 31, 2016, except where noted

## Head Office

2-1, Kojimachi 5-chome,  
Chiyoda-ku, Tokyo 102-8503, Japan  
Phone: +81-3-5877-5171  
Fax: +81-3-5877-5179  
<http://www.orico.co.jp/>

## Date of Establishment

March 15, 1951

## Number of Employees

4,416 (Consolidated)  
3,701 (Non-Consolidated)

## Paid-in Capital

¥150,015 million

## Stock Exchange Listing

Tokyo Stock Exchange

## Number of Shareholders

28,406

## Common Stock

Authorized: 1,857,951,203 shares  
Outstanding: 1,717,951,203 shares

## Preferred Stock

Authorized: 140,000,000 shares  
Outstanding: 140,000,000 shares

## Principal Shareholders\* (Common Stock)

Shareholder	Number of shares held (Thousands)	Percentage of shares held (%)
Mizuho Bank, Ltd.	836,403	48.68
ITOCHU Corporation	284,049	16.53
Japan Trustee Services Bank, Ltd. (Trust Account)	176,190	10.25
Takashi Kotegawa	19,750	1.14
The Master Trust Bank of Japan, Ltd. (Trust Account)	17,139	0.99
Century Tokyo Leasing Corporation	15,362	0.89
Nippon Tochi-Tatemono Co., Ltd.	11,500	0.66
Japan Trustee Services Bank, Ltd. (Trust Account 6)	8,747	0.50
Japan Trustee Services Bank, Ltd. (Trust Account 5)	8,741	0.50
Japan Trustee Services Bank, Ltd. (Trust Account 2)	8,600	0.50

\* Principal shareholders are based on the shareholder books as of March 31, 2016.

## Quarterly Results

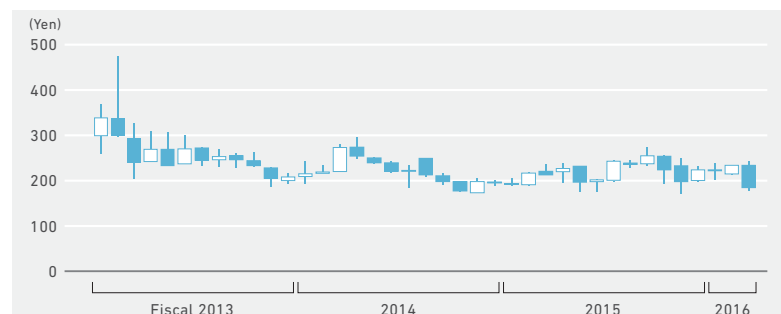
(Millions of yen)

Fiscal 2015	I	II	III	IV
Operating revenues	¥49,377	¥52,175	¥49,495	¥55,351
Operating income	8,351	3,291	4,025	5,070
Profit	8,771	3,145	3,836	2,729

Fiscal 2016	I	II	III	IV
Operating revenues	¥51,492	¥51,578	¥51,942	¥56,792
Operating income	6,724	6,750	7,942	8,070
Profit	4,591	5,860	7,261	6,870

## Common Stock Price Range

(as of June 30, 2016)



## Trading Volume

