

Corporate Data / Investor Information

As of March 31, 2017, except where noted

Head Office

2-1, Kojimachi 5-chome,
Chiyoda-ku, Tokyo 102-8503, Japan
Phone: +81-3-5877-5171
Fax: +81-3-5877-5179
<http://www.orico.co.jp/>

Date of Establishment

March 15, 1951

Number of Employees

4,456 (Consolidated)
3,658 (Non-Consolidated)

Paid-in Capital

¥150,028 million

Stock Exchange Listing

Tokyo Stock Exchange

Number of Shareholders

29,966

Common Stock

Authorized: 1,825,000,000 shares
Outstanding: 1,718,163,703 shares

Preferred Stock

Authorized: 140,000,000 shares
Outstanding: 70,000,000 shares

Principal Shareholders (Common Stock)

Shareholder	Number of shares held (Thousands)	Percentage of shares held (%)
Mizuho Bank, Ltd.	836,403	48.68
ITOCHU Corporation	284,049	16.53
Japan Trustee Services Bank, Ltd. (Trust Account)	165,637	9.64
Takashi Kotegawa	20,900	1.21
Century Tokyo Leasing Corporation	15,362	0.89
The Master Trust Bank of Japan, Ltd. (Trust Account)	12,398	0.72
Nippon Tochi-Tatemono Co., Ltd.	11,500	0.66
Japan Trustee Services Bank, Ltd. (Trust Account 5)	7,837	0.45
FUJITSU LIMITED	7,782	0.45
Chuo Fudosan K.K.	7,675	0.44

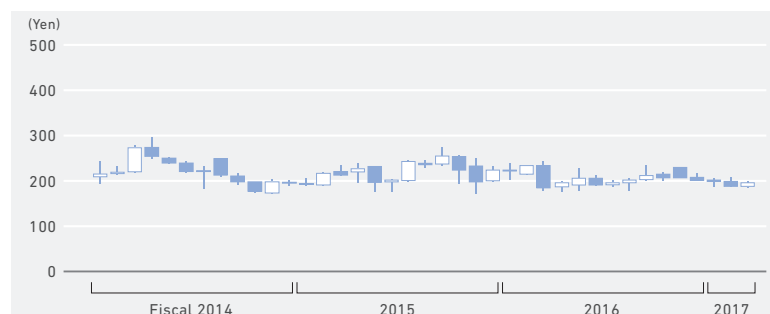
Quarterly Results

(Millions of yen)

Fiscal 2017	I	II	III	IV
Operating revenues	¥51,492	54,704	53,320	54,177
Operating profit	6,724	10,278	9,842	6,671
Profit	4,585	9,037	8,869	6,199

Common Stock Price Range

(as of June 30, 2017)



Trading Volume

