



Corporate Data / Investor Information

As of March 31, 2018, except where noted

Head Office

2-1, Kojimachi 5-chome,
Chiyoda-ku, Tokyo 102-8503, Japan
Phone: +81-3-5877-5171
Fax: +81-3-5877-5179
<https://www.orico.co.jp/>

Date of Establishment

March 15, 1951

Number of Employees

4,627 (Consolidated)
3,634 (Non-Consolidated)

Paid-in Capital

¥150,040 million

Stock Exchange Listing

Tokyo Stock Exchange

Number of Shareholders

32,504

Common Stock

Authorized: 1,825,000,000 shares
Outstanding: 1,718,346,703 shares

Preferred Stock

Authorized: 140,000,000 shares
Outstanding: 70,000,000 shares

Principal Shareholders (Common Stock)

Shareholder	Number of shares held (Thousands)	Percentage of shares held (%)
Mizuho Bank, Ltd.	836,403	48.67
ITOCHU Corporation	284,049	16.53
Japan Trustee Services Bank, Ltd. (Trust Account)	160,061	9.31
Takashi Kotegawa	25,924	1.50
Century Tokyo Leasing Corporation	15,362	0.89
Nippon Tochi-Tatemono Co., Ltd.	11,500	0.66
JP MORGAN CHASE BANK 385151	8,290	0.48
Japan Trustee Services Bank, Ltd. (Trust Account 5)	8,154	0.47
FUJITSU LIMITED	7,782	0.45
Chuo Fudosan K.K.	7,675	0.44

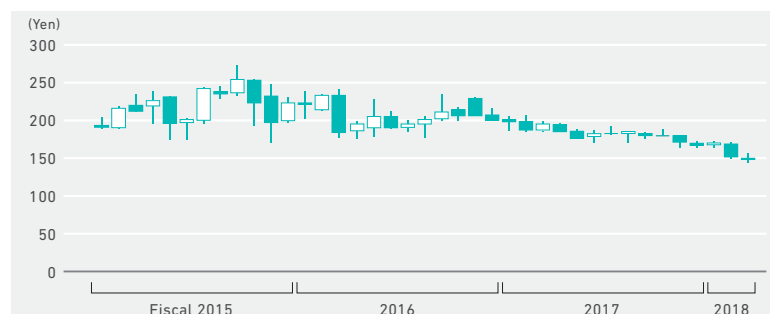
Quarterly Results

(Millions of yen)

Fiscal 2018	I	II	III	IV
Operating revenues	¥52,857	58,953	54,391	58,197
Operating profit	5,015	10,801	4,439	9,833
Profit	4,877	8,966	4,150	10,031

Common Stock Price Range

(as of June 30, 2018)



Trading Volume

