



Corporate Data / Investor Information

As of March 31, 2019, except where noted

Head Office

2-1, Kojimachi 5-chome,
Chiyoda-ku, Tokyo 102-8503, Japan
Phone: +81-3-5877-5171
Fax: +81-3-5877-5179
<https://www.orico.co.jp/>

Date of Establishment

March 15, 1951

Number of Employees

4,685 (Consolidated)
3,604 (Non-Consolidated)

Paid-in Capital

¥150,044 million

Stock Exchange Listing

Tokyo Stock Exchange

Number of Shareholders

31,402

Shares Authorized to Be Issued

1,965,000,000 shares
Common Stock: 1,825,000,000 shares
Preferred Stock: 140,000,000 shares

Outstanding Shares

1,768,434,203 shares
Common Stock: 1,718,434,203 shares
1st Series Class I Preferred Stock: 50,000,000 shares

Principal Shareholders (Common Stock)

Shareholder	Number of shares held (Thousands)	Percentage of shares held (%)
Mizuho Bank, Ltd.	836,403	48.67
ITOCHU Corporation	284,049	16.53
Japan Trustee Services Bank, Ltd. (Trust Account)	140,527	8.17
The Master Trust Bank of Japan, Ltd. (Trust Account)	19,037	1.10
Tokyo Century Corporation	15,362	0.89
Japan Trustee Services Bank, Ltd. (Trust Account 9)	12,932	0.75
Nippon Tochi-Tatemono Co., Ltd.	11,500	0.66
Japan Trustee Services Bank, Ltd. (Trust Account 5)	10,396	0.60
JP MORGAN CHASE BANK 385151	9,910	0.57
Chuo Fudosan K.K.	7,675	0.44

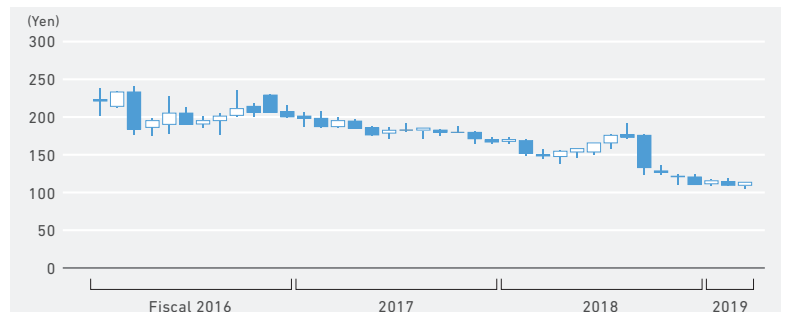
Quarterly Results

(Millions of yen)

Fiscal 2019	I	II	III	IV
Operating revenues	¥55,703	115,280	172,019	233,369
Operating profit	5,654	11,401	14,724	21,964
Profit	3,415	20,150	22,914	28,877

Common Stock Price Range

(as of June 30, 2019)



Trading Volume

