



Corporate Data / Investor Information

As of March 31, 2020, except where noted

Head Office

2-1, Kojimachi 5-chome,
Chiyoda-ku, Tokyo 102-8503, Japan
Phone: +81-3-5877-5171
Fax: +81-3-5877-5179
<https://www.orico.co.jp/>

Date of Establishment

March 15, 1951

Number of Employees

4,652 (Consolidated)
3,432 (Non-Consolidated)

Paid-in Capital

¥150,051 million

Stock Exchange Listing

Tokyo Stock Exchange

Number of Shareholders

30,710
Common Stock: 30,709
1st Series Class I Preferred Stock: 1

Shares Authorized to Be Issued

1,965,000,000 shares
Common Stock: 1,825,000,000 shares
Preferred Stock: 140,000,000 shares

Outstanding Shares

1,753,494,703 shares
Common Stock: 1,718,494,703 shares
1st Series Class I Preferred Stock: 35,000,000 shares

Principal Shareholders (Common Stock)

Shareholder	Number of shares held (Thousands)	Percentage of shares held (%)
Mizuho Bank, Ltd.	836,403	48.67
ITOCHU Corporation	284,049	16.52
Japan Trustee Services Bank, Ltd. (Trust Account)	126,789	7.37
The Master Trust Bank of Japan, Ltd. (Trust Account)	29,972	1.74
Tokyo Century Corporation	15,362	0.89
Japan Trustee Services Bank, Ltd. (Trust Account 9)	13,401	0.77
Nippon Tochi-Tatemono Co., Ltd.	11,500	0.66
JP MORGAN CHASE BANK 385151	11,085	0.64
Japan Trustee Services Bank, Ltd. (Trust Account 5)	10,843	0.63
STATE STREET BANK WEST CLIENT - TREATY 505234	8,252	0.48

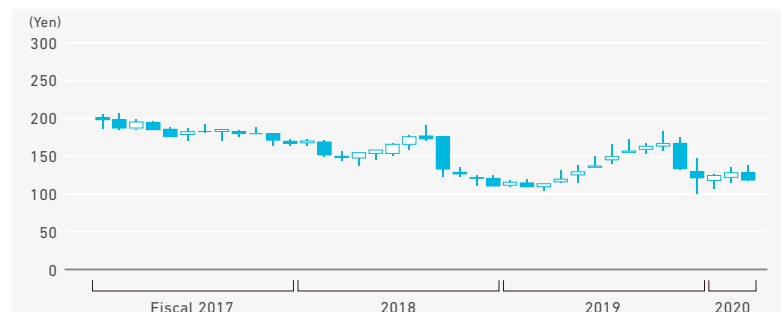
Quarterly Results

(Millions of yen)

Fiscal 2020	I	II	III	IV
Operating revenues	¥58,499	122,658	181,178	243,135
Operating profit	6,235	15,998	21,535	24,439
Profit	4,516	12,927	17,035	20,654

Common Stock Price Range

(as of June 30, 2020)



Trading Volume

